




Youth Engagement Team – Conference on Ending Homelessness

INNOVATIVE INTEGRATION FOR WORKING WITH YOUTH, YOUNG ADULTS
AND FAMILIES



What is YHDP and origins of the Youth Engagement Team Program Model

KEY MODEL COMPONENTS:

COMMUNITY STAKEHOLDER AND YOUTH INPUT

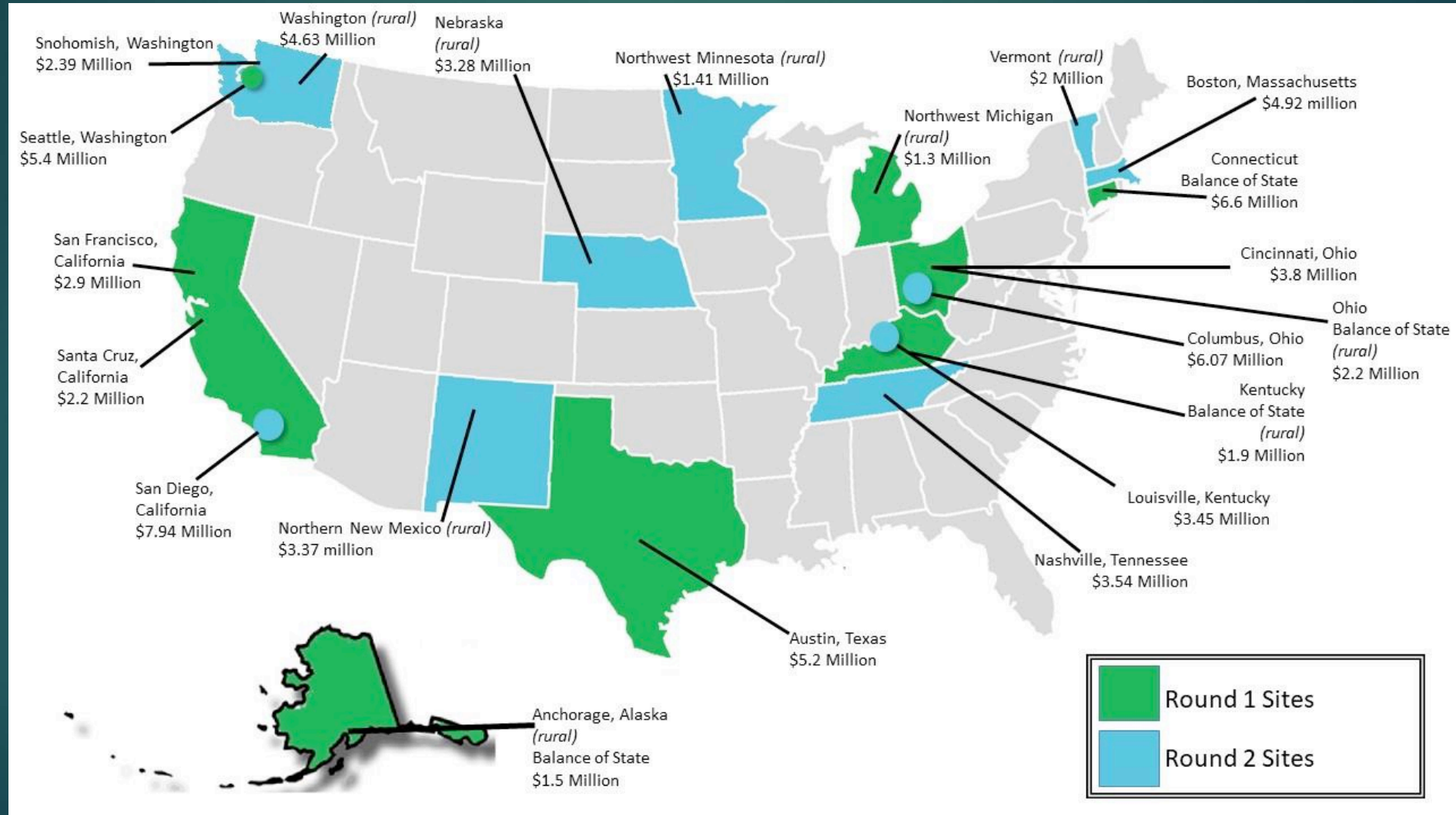
(JOINT COMMITTEE AND YAB)

EQUITY AND DISPROPORTIONALITY GOALS

WRAPAROUND APPROACH

SYSTEMS INVOLVED

YHDP Communities



Coordinated Community Plan (CCP)

- ▶ Requires communities to bring together a wide variety of stakeholders, including housing providers, local and state child welfare agencies, school districts, workforce development organizations, and the juvenile justice system to create a *coordinated community plan* that assesses the needs of youth at-risk of and experiencing homelessness in the community and addresses how it will use the money from the YHDP grant, along with other funding sources, to prevent and end homelessness.
- ▶ The Plan has to be approved by the community's YAB, the CoC Board and the CW agency.

Coordinated Community Plan (CCP)

It must include:

1. **Clear, data driven statement of need**
2. **Key partnerships and roles**
3. **Core plan components**
 - ▶ Shared vision for ending youth homelessness
 - ▶ Goals, objectives, and actions
 - ▶ List of YHDP funded projects and other new projects needed
 - ▶ Governance structure: org chart and decision-making process
 - ▶ Continuous Quality Improvement (CQI) plan
4. **Values and Principles**

Seattle/King County Continuum of Care Youth Homelessness Demonstration Program Coordinated Community Plan

All Home, the Seattle-King County Continuum of Care (CoC), is submitting the following Coordinated Community Plan as part of our Youth Homelessness Demonstration Program (YHDP) Grant. This plan follows the Draft YHDP Plan submitted to HUD in July 2017. The revisions include:

- Further detail in the Statement of Need, detailing data points missing from the first draft and incorporating results of recent needs assessments (beginning on page 11) conducted with youth and young adults experiencing homelessness or housing instability
- More comprehensive detail and specifics related to the Objectives and Action Steps (beginning on page 13) to reflect clear measures, action steps to address the needs of all subpopulations, responsible partners, and timeline
- Updated Project Timeline and Planning Activities, including implementation of the new Joint Committee (beginning on page 20)
- The final and revised list of YHDP-Funded projects and inclusion of non-YHDP Funded Projects (beginning on page 24)
- Overview of the key strategies for addressing the needs of each subpopulation and each of the key principles (beginning on page 30) outlined in the HUD YHDP Notice (additional data and specific action steps also incorporated throughout the plan)
- A refined Continuous Quality Improvement Plan (see page 33)
- Updated Partner List (Appendix E) and Project List (Appendix F)
- A new Appendix providing further detail on the results of the Scenario Planning Tool (Appendix D) and references throughout the plan of how each project is responsive to the current need in King County and informed by the needs of youth and young as voiced by young people in our community.

Acknowledgements

As the Continuum of Care Lead agency and lead for the Youth Homelessness Demonstration Program, All Home would like to thank the many individuals, community partners, and organizations that participated in this effort.

More than 100 partners and stakeholders have contributed their experience, expertise, and best thinking to ensure that the YHDP grants lead to undeniable progress in ending the experience of homelessness and housing instability for youth and young adults in our community. From contributions to the original application which resulted in Seattle/King County being selected as one of the ten YHDP communities, to the many hours of strategizing, ideating, and story/experience sharing that has developed the Coordinated Community Plan (the YHDP Plan) and accompanying projects, the support of all participants was, and remains, crucial to the successful impact of the grants.

First and foremost, we thank all youth and young adults who have shared their experience and their expertise to contribute to the YHDP Plan, including all of the Youth Advisory Board (YAB) members and

Seattle/King County YHDP Projects

1. Bridge Housing Project
 - ▶ YouthCare
 - ▶ United Indians of All Tribes
2. Youth Engagement Team
 - ▶ YMCA
 - ▶ Friends of Youth
3. YA Navigation and Diversion
 - ▶ Therapeutic Health Services
 - ▶ YMCA
4. Behavioral Health Crisis Response Team
 - ▶ YMCA

YHDP Timeline

Round 1 Projects
Start

YHDP Round 1 Project
Period Ends

2 Year Project Period

CoC Renewal Project Period Begins

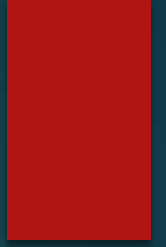
October 2018

October 2020

The Campaign to Live Out Our Community Plan:



Questions and Answers about YHDP



Transforming the System

Drive collectively towards action and impact through increased coordination of funding and accountability structures

Addressing systemic racism and root causes of inequity internally and externally through solutions which are explicit to race and other marginalized communities

Breaking down fragmentation and siloes through radical collaboration with other systems (juvenile justice, education, child welfare, employment, etc.)

Addressing equity by increasing the diversity in System and Organizational Leadership and Board membership

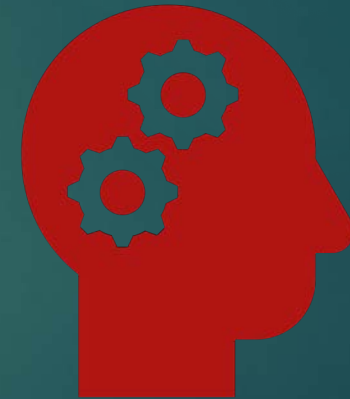
Double down on evidenced-based and best-practice strategies

Commitment to continuous improvement driven by an agreed upon Theory of Change



Theoretical and Scientific Evidence

1. Racial Equity & Social Justice Framework
2. Human Centered Design & Innovation Dynamics
3. Transdisciplinary Science, Team Science, Implementation Science, & Improvement Science



Key Components

Transparent and readily accessible data for real-time actionable improvement



Nimble Command-Center Style Implementation Team



Flexible arsenal of resources that can be shifted in response to data



Proven menu of strategies and interventions



Systems Transformation Roadmap

13

via Racial Equity Lens

Create
Quality
"By-
Names-
List"

Identify Current
State Process
Challenges &
Articulate
Transformed
State Vision

Identify
Key Drivers

Test System
Level and
Program Level
Interventions


Execute
Continuous
Improvement
Cycles

Scale Up
What
Works

Develop
and
Execute
Sustainabili-
ty Plan

via Racial Equity Lens

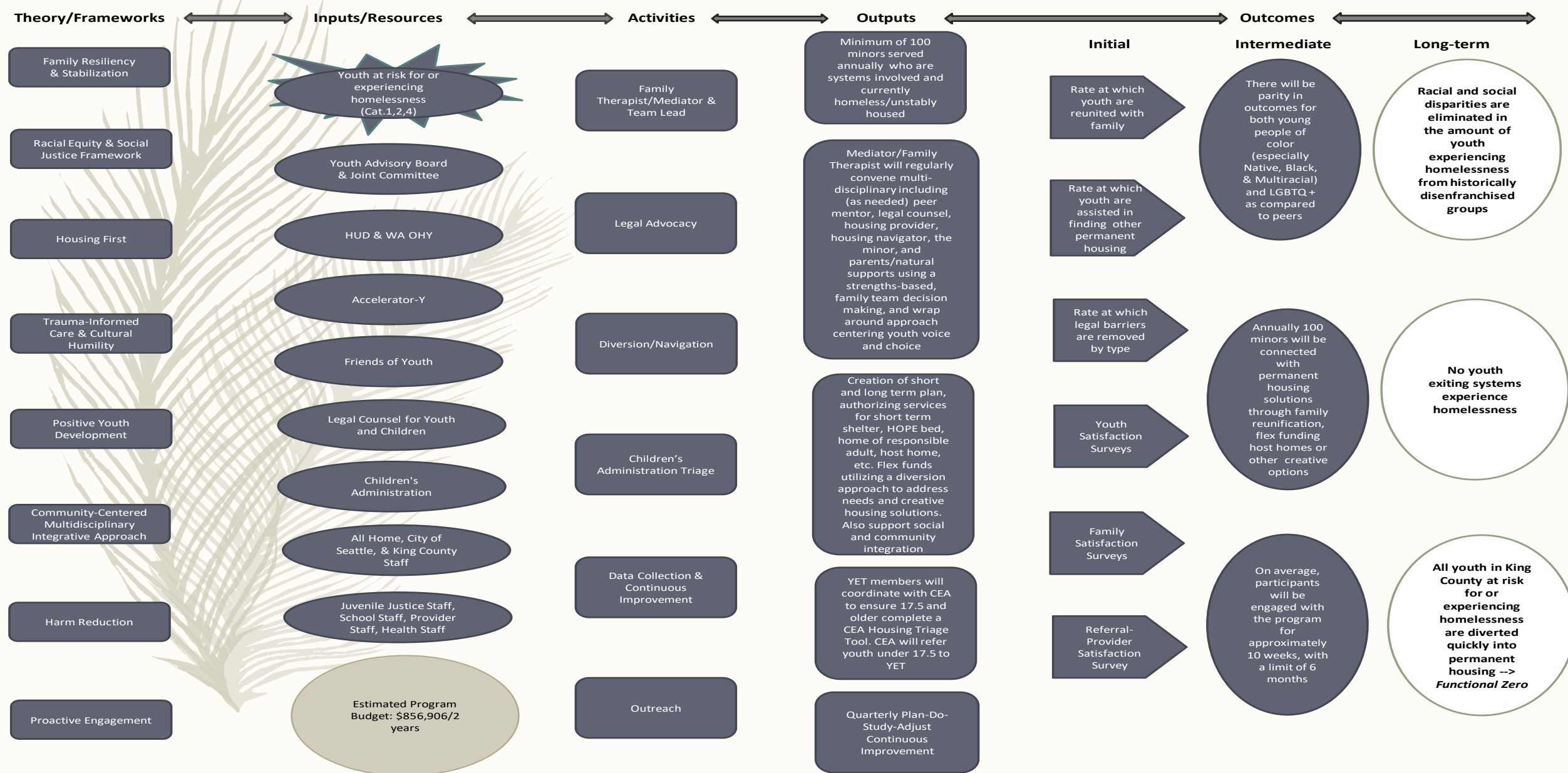




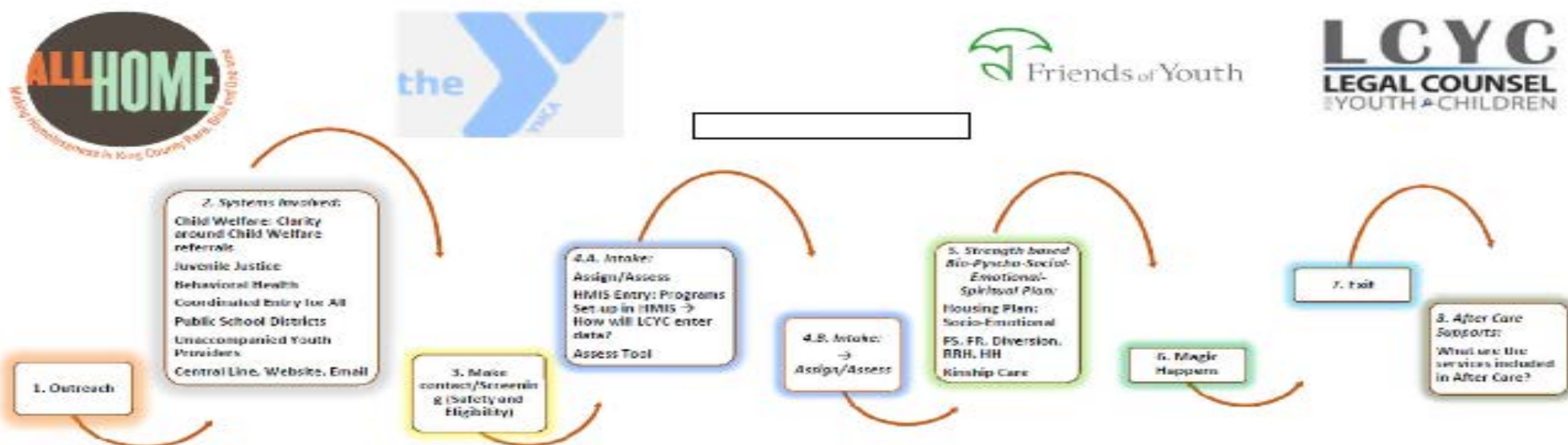
Youth Engagement Team Theory of Change Logic Modeling



Theory of Change Logic Model for the Youth Engagement Team



YET Process Map



Desired Program Outcomes

Exits to Safe and Stable Housing: Family Reunification, Host Homes, Transitional Living, other Creative or Legal Solutions

Social and Emotional Well Being Improves (Self Sufficiency Matrix)

Increased Permanent Connections (Wraparound/MDT Model)

Equity: LGBTQ and youth of color achieve program outcomes at same rates as overall population

Improved Partnership with Child Welfare

Outreach and Accessibility to Systems Involved Youth

Increased Legal Support for Safety

Increased Legal Support for Education

Mental Health

Utilizing a youth centered, strength based therapeutic approach.

Mobile – meets at place of youth or family's choosing.

Responsive – Referrals responded to within 24-48 hrs.

Smaller caseload – Ability for therapist to work flexibly and intensively.

Wraparound – identifying key supports in youths' lives and incorporates natural supports whenever possible in planning.

Housing Navigation

CEA applications

Host Homes program

Family/Kinship reunification and support

Transitional Living Housing applications

Assistance for family or supportive adult in searching for an apartment.

Financial help with move-in costs and rental assistance

Employment

Education

Applying for benefits and insurance



Referral, Eligibility and Service Delivery Model



YET

Youth
Engagement
Team

FOR PREVENTING HOMELESSNESS

PROGRAM OVERVIEW

The YET program offers youth centered housing intervention, family reunification and supportive services. YET is a multi-systems team of therapy, case management, and legal professionals who use a wrap-around approach to serve youth experiencing a housing crisis.

PROGRAM OFFERS

- › Housing Navigation
- › Civil Legal Aid
- › Case Management
- › Emotional Support Services
- › Wrap Around Approach
- › Family Reunification

QUALIFICATIONS

- › Youth, 12-17 years
- › Unhoused, or at risk of experiencing homelessness
- › Resides in King County

APPLICATION PROCESS

- › Provider referral only
- › Call intake line: 206 413 5506
- › Email: yet@seattleymca.org

REFERRALS FROM

- › Public Schools
- › CEA
- › Juvenile Justice
- › Behavioral Health
- › Children's Administration
- › Unaccompanied Youth Providers



Legal Assistance

Clearing up debt

Accessing local or Social Security
benefits

Clearing court fines/fees

Criminal record sealing, warrants

Education advocacy

Protection orders

Gender/name changes

Guardianships

Child protective services
advocacy

Emancipation

Identity theft

Immigration

Landlord/tenant issues

Parenting plans

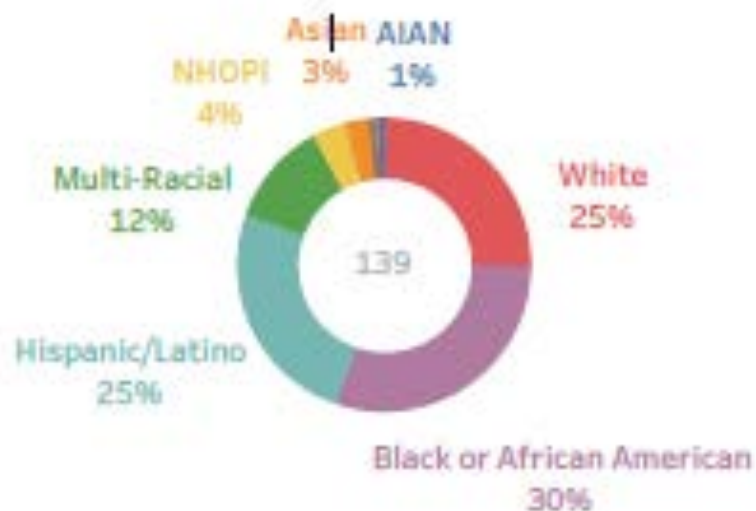
Lawyers are not mandated reporters.

Youth Homelessness Demonstration Program

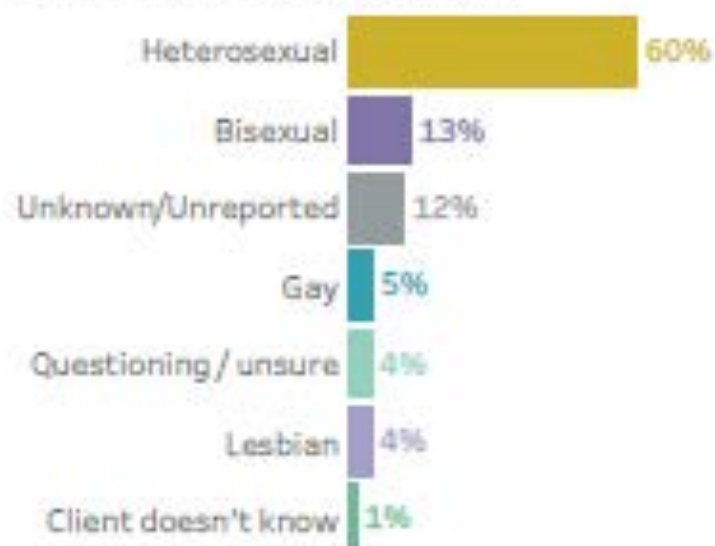
139 enrollments were reported within
August 2018 - August 2019

2018	65	FOY	31
		LCYC	69
2019	74	YMCA	39

Race/Ethnicity Distribution



Sexual Orientation Distribution



73 exits were reported in the timeframe

2018

14

FOY

15

2019

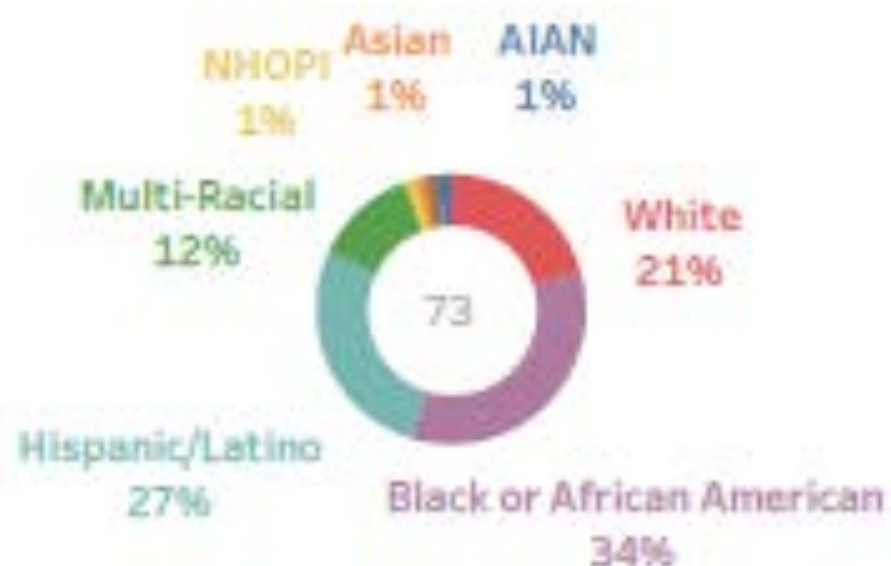
59

LCYC

35

YMCA

23



YHDP Outcomes

1	YAYA enrollments with Foster Care or Juvenile Justice system involvement	19%	Asian	25%
			Black or African American	26%
			Hispanic/Latino	11%
			Multi-Racial	8%
			NHOPI	80%
			White	17%

2	Average length of enrollment	113 days	AIAN	91 days
			Asian	121 days
			Black or African American	116 days
			Hispanic/Latino	99 days
			Multi-Racial	127 days
			NHOPI	132 days
			Unknown	275 days
			White	109 days

3	Successful Exit Rate (* Includes exits to Permanent/Temporary housing and foster care) (Excluding LCYC)	82%	AIAN	100%
			Asian	100%
			Black or African American	64%
			Hispanic/Latino	60%
			Multi-Racial	44%
			NHOPI	100%
			Unknown	100%
	Exit Rate to 'permanent housing with family' (*Excluding LCYC)	40%	White	33%

Rate of positive education status at exit

4.

*(count of enrollments that gained or maintained regular education, obtained GED, graduated from high school at exit)

74%

AIAN	100%
Asian	100%
Black or African American	83%
Hispanic/Latino	65%
Multi-Racial	75%
Unknown	100%
White	71%

5.

83% of the assessments reported "No community involvement or in survivor mode" at entry which decreased to 39% at exit

Opportunities and Challenges

Host Home Outcome



When it works:

Barriers we have seen:

Family Reunification



When it works:

Barriers we have seen:

Court



When it works:

Barriers we have seen: