

Clients as social  
services staff?

Absolutely!

Welcome to  
**ASSET!**



# ASPIRING SOCIAL SERVICES EMPLOYEE TRAINING

A PROGRAM OF



CATHOLIC COMMUNITY SERVICES  
SERVING PEOPLE OF ALL BELIEFS

# What is ASSET?

Employment prep

Volunteer internship/job shadow

Opportunity for CCS/CHS clients and partners

Gain knowledge & experience in social services setting



# ASSET

**Aspiring Social Services Employee Training**

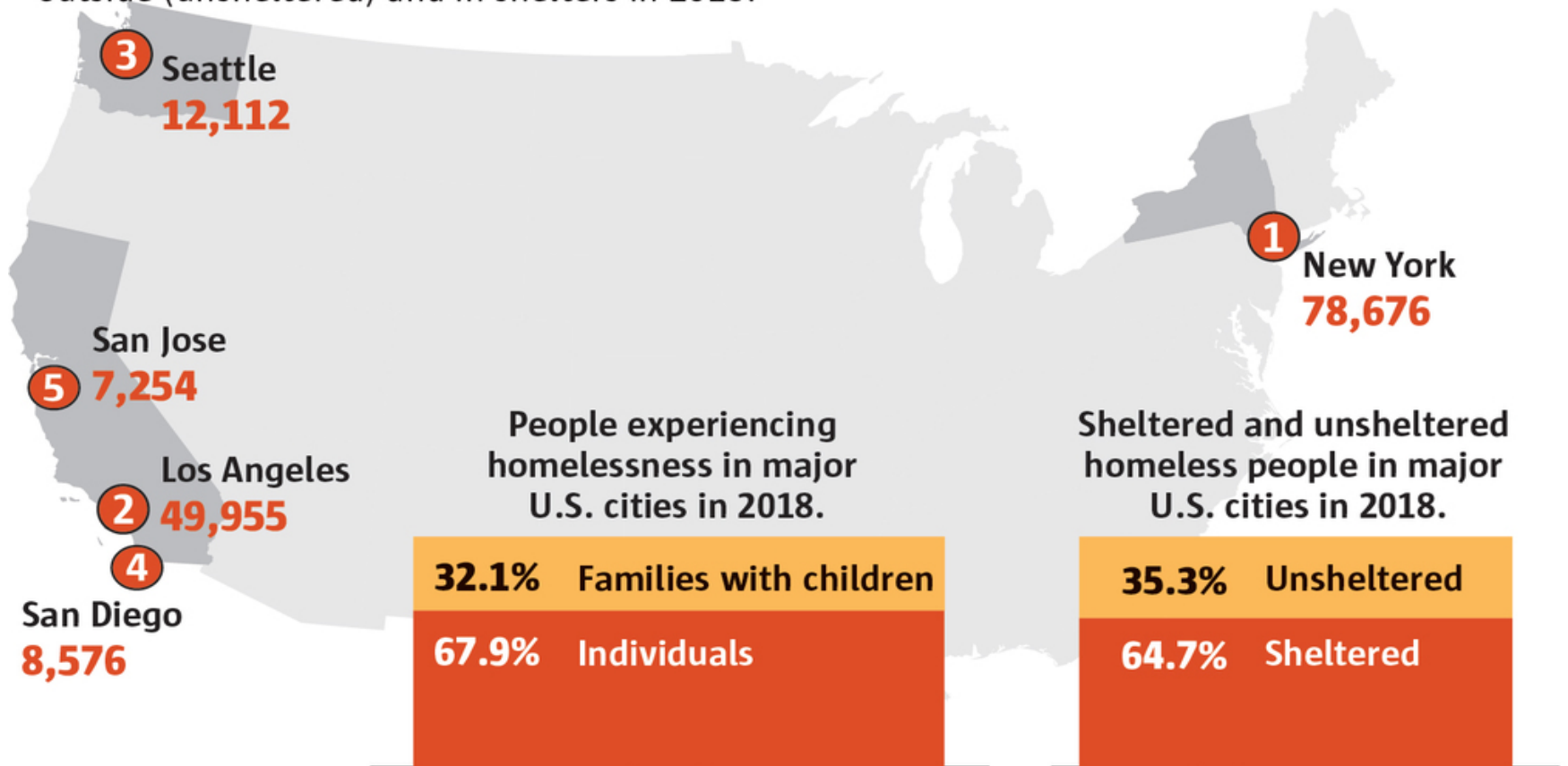
A PROGRAM OF



**CATHOLIC COMMUNITY SERVICES**  
SERVING PEOPLE OF ALL BELIEFS

# Homelessness in major U.S. cities

Seattle has one of the largest homeless populations in the U.S. when counting people living outside (unsheltered) and in shelters in 2018.



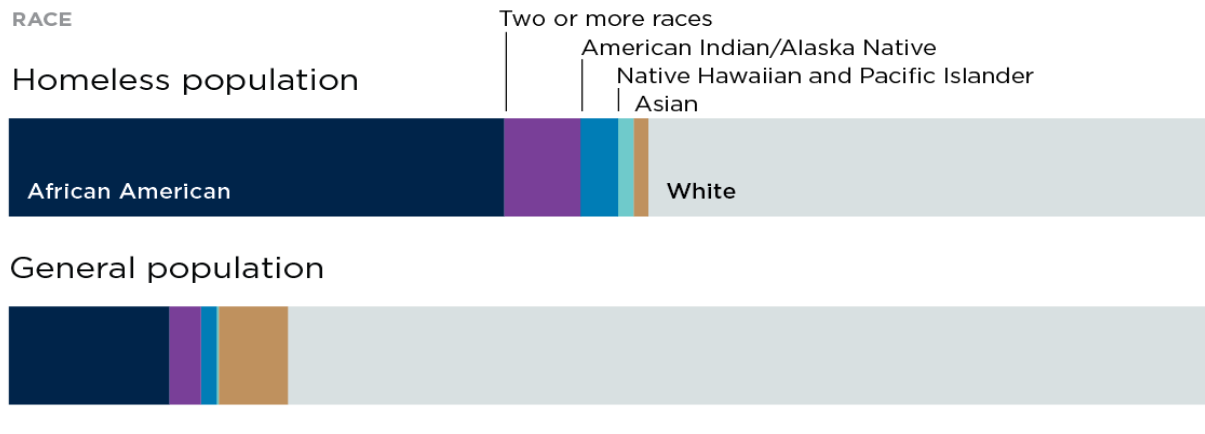
Source: The 2018 Annual Homeless Assessment Report, U.S. Department of Housing and Urban Development

MARK NOWLIN / THE SEATTLE TIMES

# Why do we need programs like ASSET?

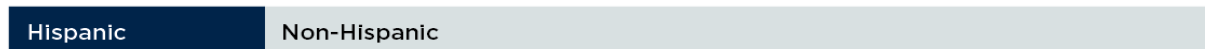
## Most Minority Groups Make up a Larger Share of the Homeless Population Than They Do of the General Population

Race and ethnicity of those experiencing homelessness compared with the general population



### ETHNICITY

Homeless population



General population



Homeless population data are for a given night in 2017.

**Source:** 2017 *Annual Homeless Assessment Report to Congress*, Part 1

ASSET staff are empathetic and are responsive to clients' needs.



# CCS/CHS Values

We believe...

- ...in the sacredness and dignity of every human person.
- ...in the Gospel message of hope and being leaders, advocates, providers and partners serving poor and vulnerable people.
- ...in employees and volunteers working in an environment which offers respect, teamwork and excellence.
- ...in serving and supporting poor and vulnerable people through the provision of quality, integrated services and housing. Our focus is on those individuals, children, families, and communities struggling with poverty and the effects of intolerance and racism. We actively join with others to work for justice.
- ...in joining with others to change the systems which oppress, discriminate or otherwise cause human suffering.

# Essential Learning & Experiences



- ASSET Kick-off & Orientation
  - Trauma Informed Care
  - Structural Racism, Implicit Bias
  - Motivational Interviewing
  - Career Day & Advocacy 101
  - Building Your Resume
  - De-escalation & Non-violent Crisis Intervention
  - Professional Boundaries & Work Ethics
- + Janitorial Training or Internships



# ASSET internships & work: teamwork & learning.





# Advocacy!

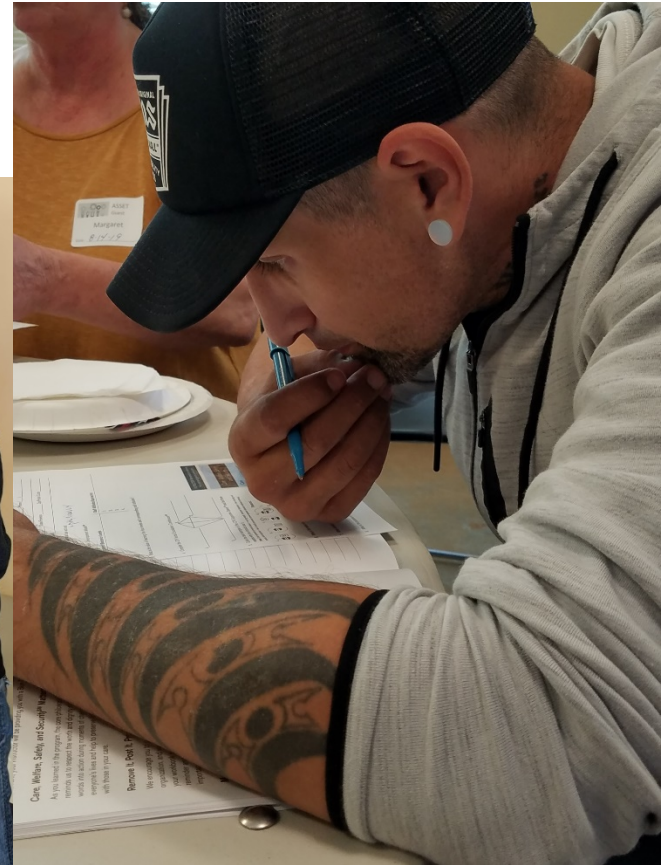


ASSET staff reflect the communities they serve.





# Goals. Commitment.



# Outcomes

## 88 client student graduates!





# Outcomes

47 graduates have  
been hired by CCS.





# Every ASSET student's journey is different



*Start by doing what's necessary; then do what's possible; and suddenly you are doing the impossible.*

*St. Francis of Assisi*

# Louise Williams





# Dwight Callier



# Dennis Bateman



# Thank you!

## Questions?



# ASSET

**Aspiring Social Services Employee Training**

A PROGRAM OF



CATHOLIC COMMUNITY SERVICES  
SERVING PEOPLE OF ALL BELIEFS